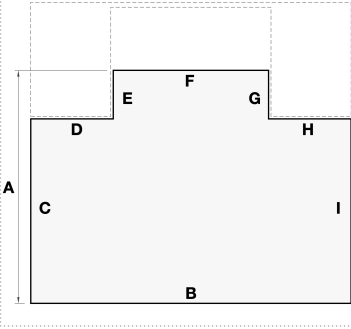
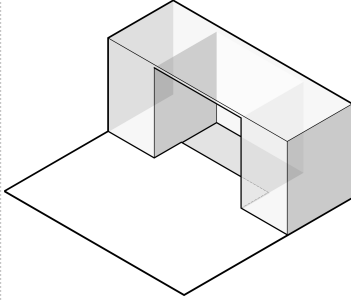
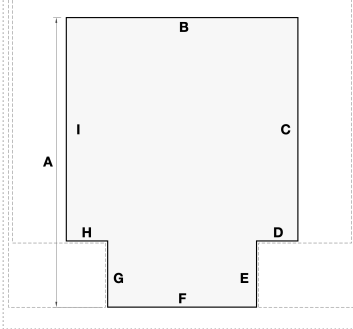
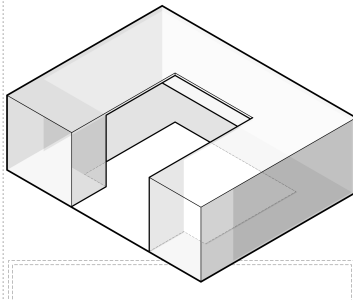


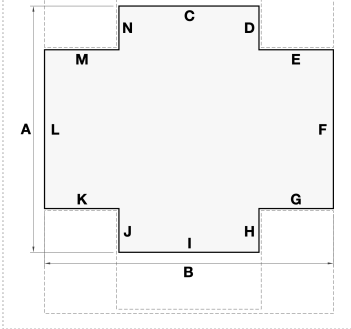
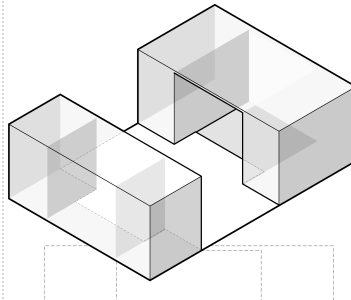
## Single Lip



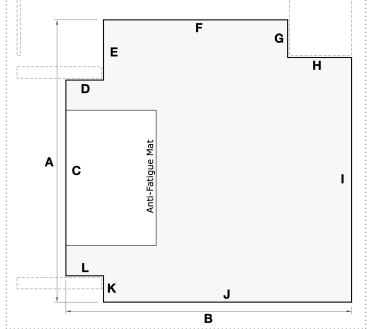
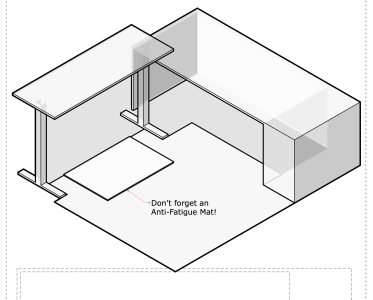
## Single Lip



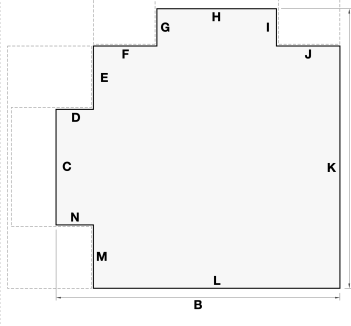
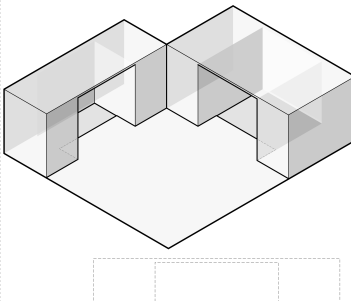
## Double Lip



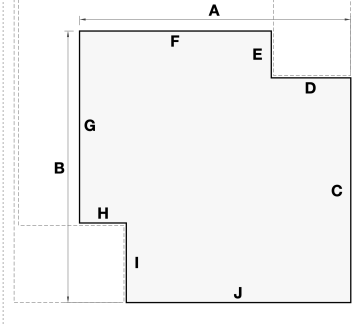
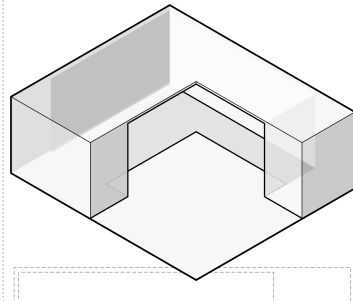
## Stand Up Desk



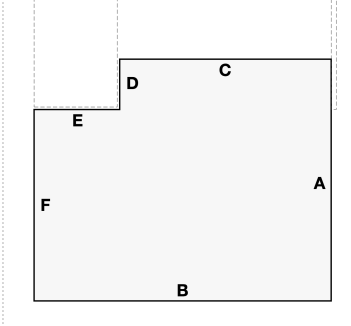
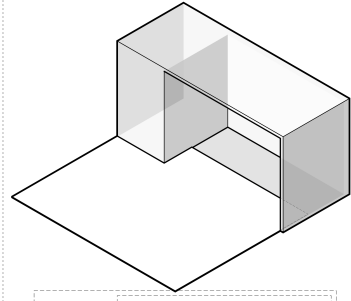
## Computer Table



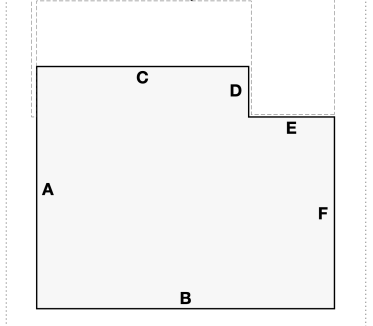
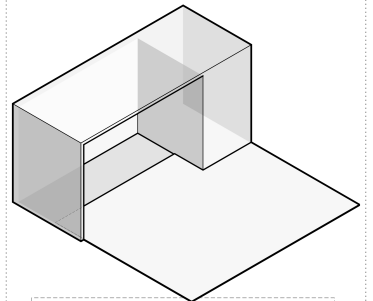
## Modular



## Extension Right



## Extension Left



## Measuring Guidelines

### TIPS FOR MEASURING:

- Drawings **do not** need to be to scale.
- Allow for 8" - 10" under the front edge of the desk for the lip.
- Allow for 36" back from the front edge of the desk for chair space.
- Measure the widths of the pedestal drawers for the Cut Out Widths.
- Measure the knee space between the pedestal drawers for the Lip Width.
- Make sure opposite sides add up to the same overall measurement.
- Email us a sketch or picture and we'll help!

Drawings			
	Executive (.250")		Beveled Edge
	Premium (.200")		Vented
	Standard (.130")		
	Standard Black (.130")		
	Non-Studded (.110")		
	Non-Studded Black (.110")		

Dealer Information		Ship To Address	
Company:		Quote	Name:
Rep:		Order	Attn:
Email:		PO Number:	Address:
Phone:			
			Phone: