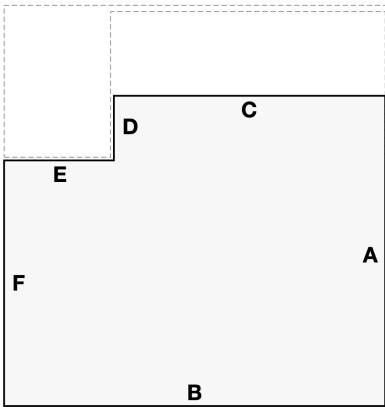
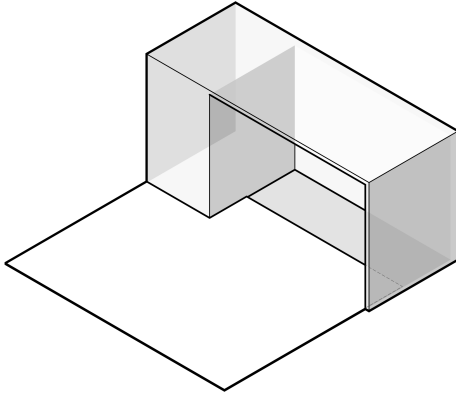
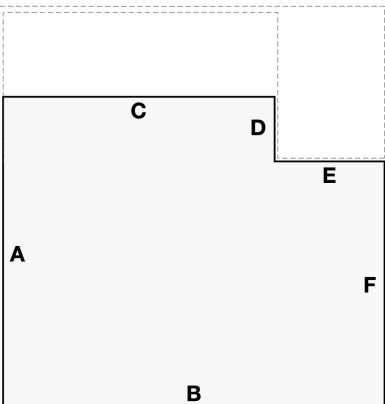
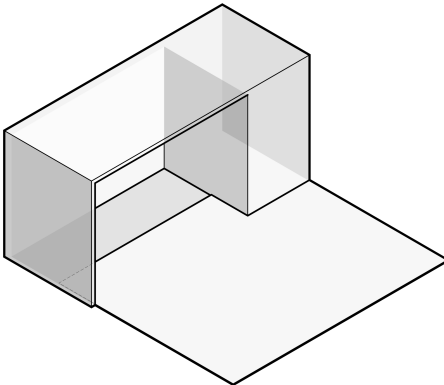


Extension Right



Extension Left



Measuring Guidelines

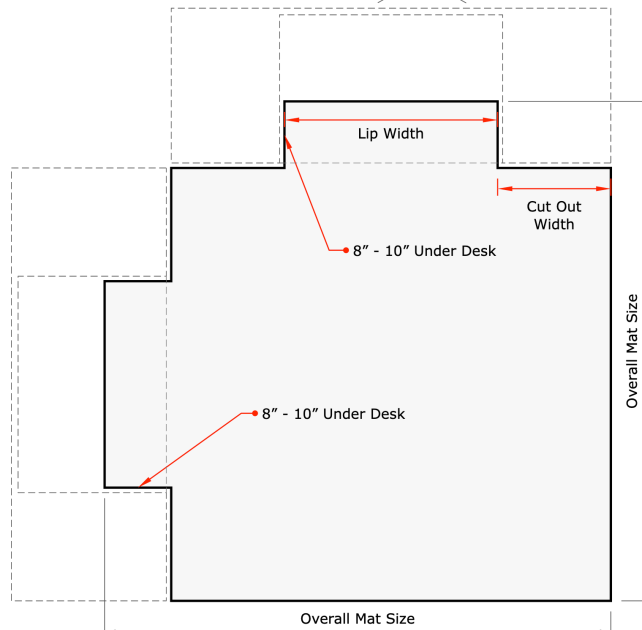
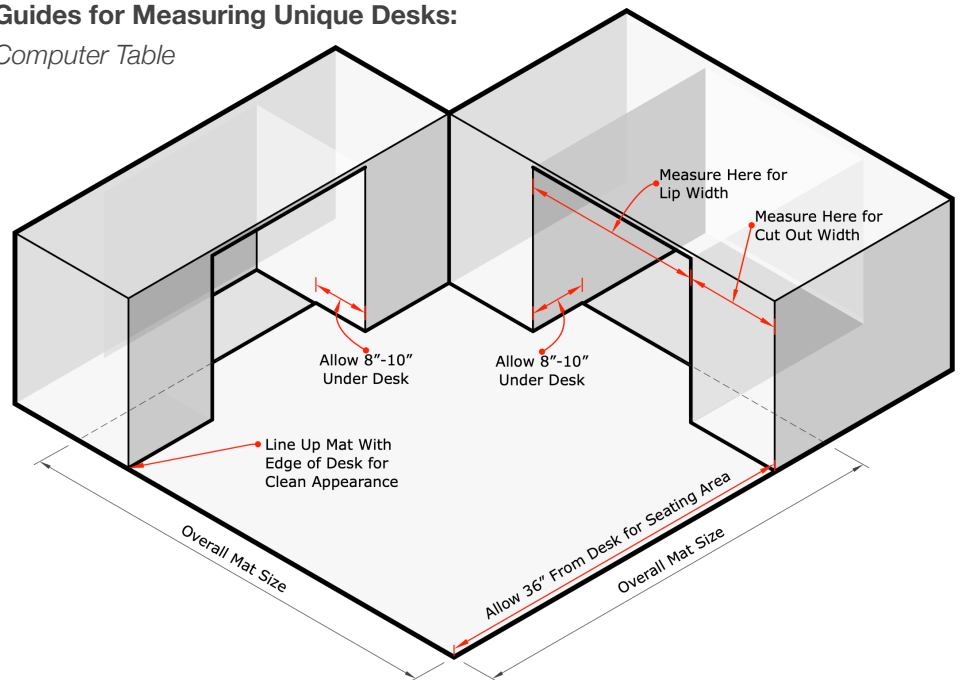
TIPS FOR MEASURING:

- Draw the rough shape of the mat first.
- Allow for 8" - 10" under the front edge of the desk for each lip.
- Allow for 36" back from the front edge of the desk for chair space.
- Measure the widths of the pedestal drawers for the Cut Out Widths.
- Measure the knee space between the pedestal drawers for the Lip Width.
- Drawings **do not** need to be to scale.
- Make sure opposite sides add up to the same overall measurement.
- Email us a sketch or picture and we'll help!

Custom Configurations

Guides for Measuring Unique Desks:

Computer Table

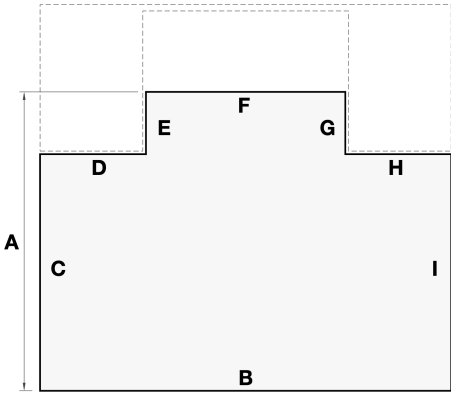
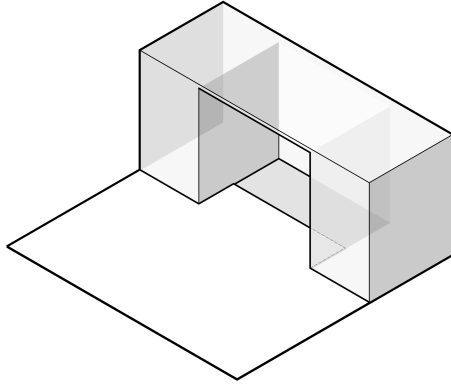


NEED HELP?

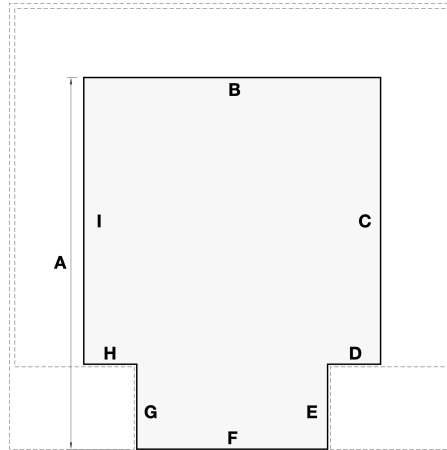
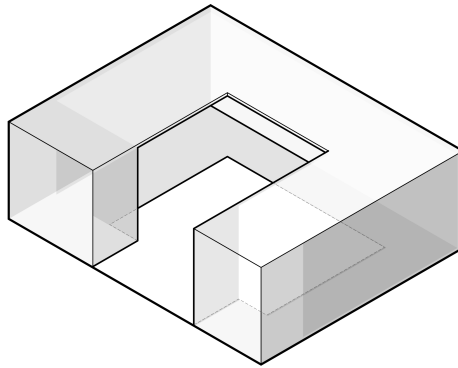
Email us a picture of the desk area or drawing and we can help!

sales@chairmats.net

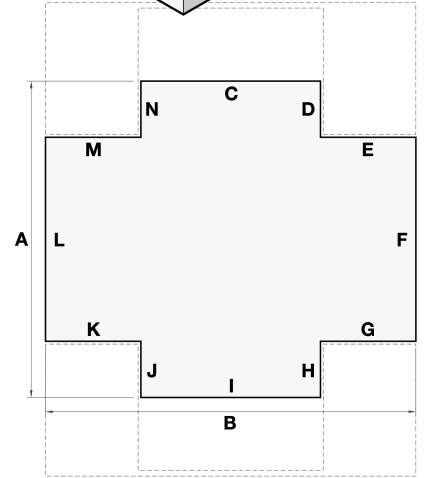
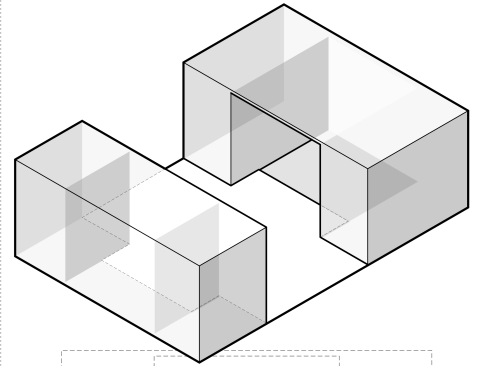
Single Lip



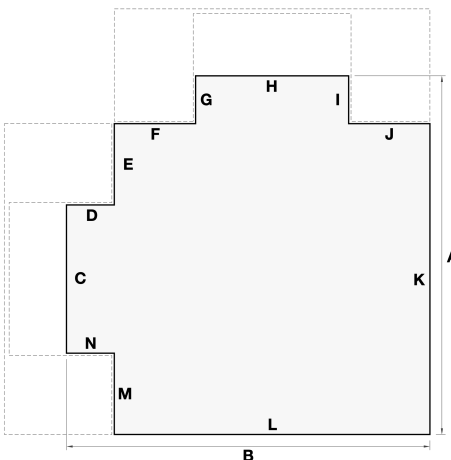
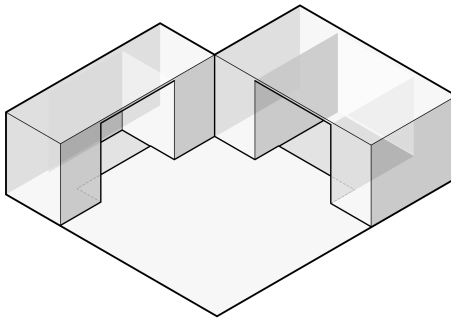
Single Lip



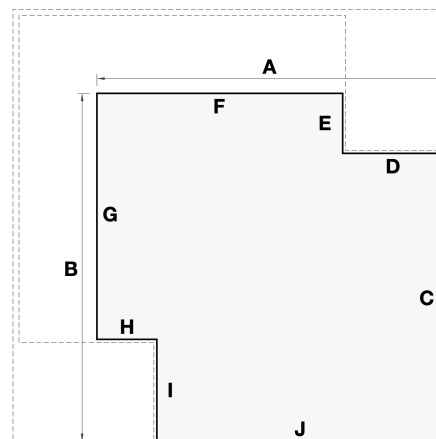
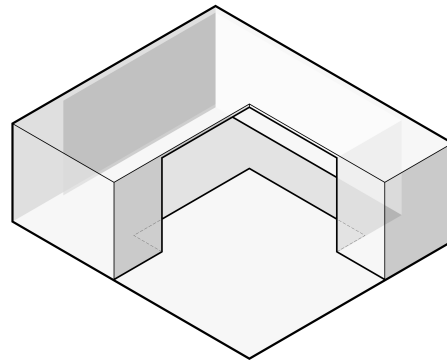
Double Lip



Computer Table



Modular



Stand Up Desk

